



An epitome of life!

The beginning of life!

The Perch is one of its kind passionately designed luxurious gated community at Tellapur, Hyderabad, where you will experience the essence of Peace, Comfort, Opulence, Space and Style. This unique creation is naturally exotic, innovatively planned, crafted with precision and elegantly designed. The Perch is created especially for those who wish to live a regal life drenched in ecstasies of supreme luxury.



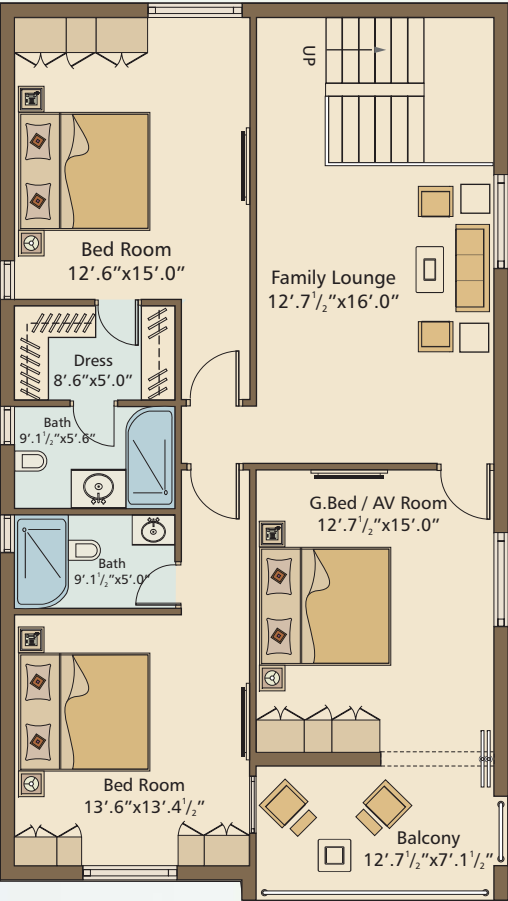
Plotted Area - 11230 Sq. Yds. | Amenities Area - 755 Sq. Yds. | Road Area - 5437 Sq. Yds. | Open / Green Area - 1860 Sq. Yds.
HMDA Area - 683 Sq. Yds | Affected Roads Area - 456 Sq. Yds | Affected Tank Bund Area - 2340 Sq. Yds | Total Area - 22762 Sq. Yds.



East Facing Villas



Ground Floor Plan

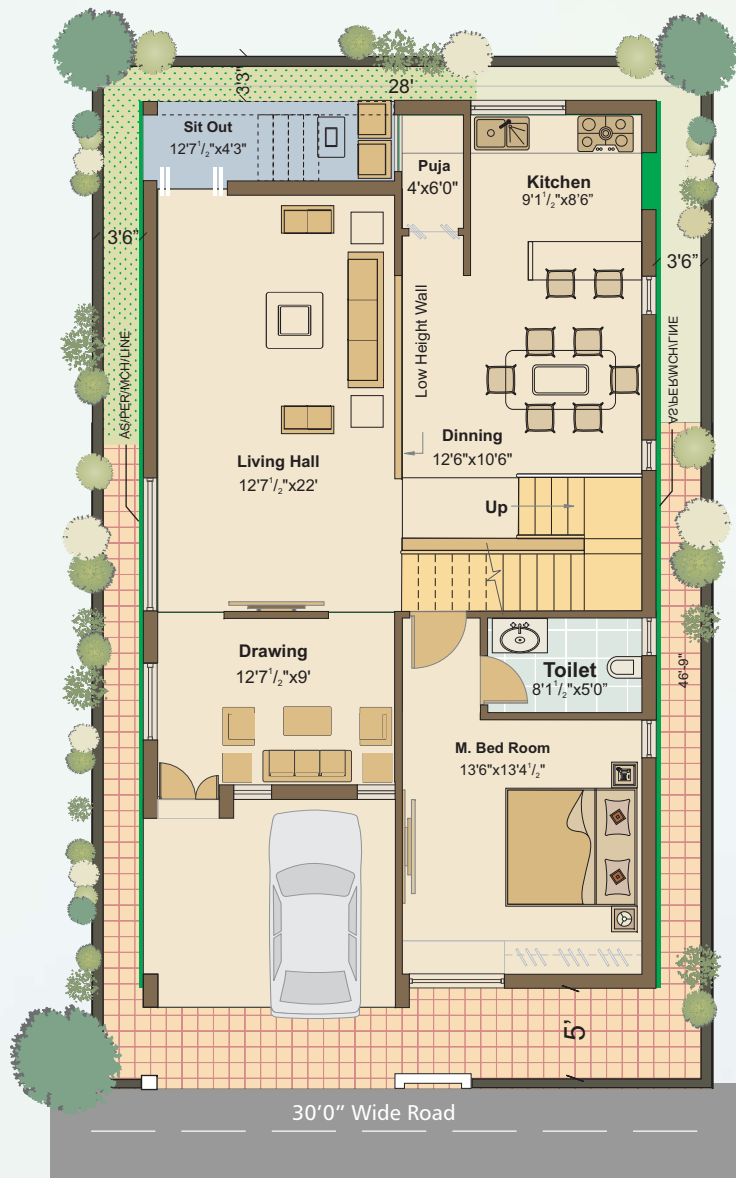


First Floor Plan

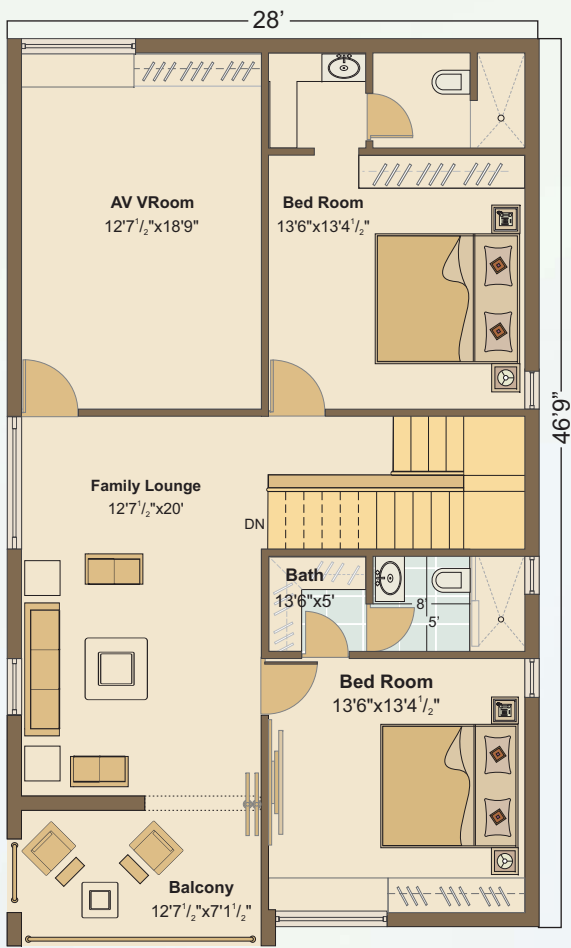
Area Statement
Plot Area - 214 sq. yds
Ground Floor - 1355 sft
First Floor - 1337 sft
Total Area - 2692 sft

The Villas facing East and West at The Perch have been designed as per 'Vaastu', while the most diligent care has been taken to create an elegant elevation that symbolises your style and class.

West Facing Villas



Ground Floor Plan



First Floor Plan

Area Statement	
Plot Area -	214 sq. yds
Ground Floor -	1355 sft
First Floor -	1337 sft
Total Area -	2692 sft

Set within a lush green space, every Villa is exquisitely crafted to experience exclusivity, comfort and most importantly more space. Enjoy privacy in your private garden in a well-designed 4-bedroom row house.

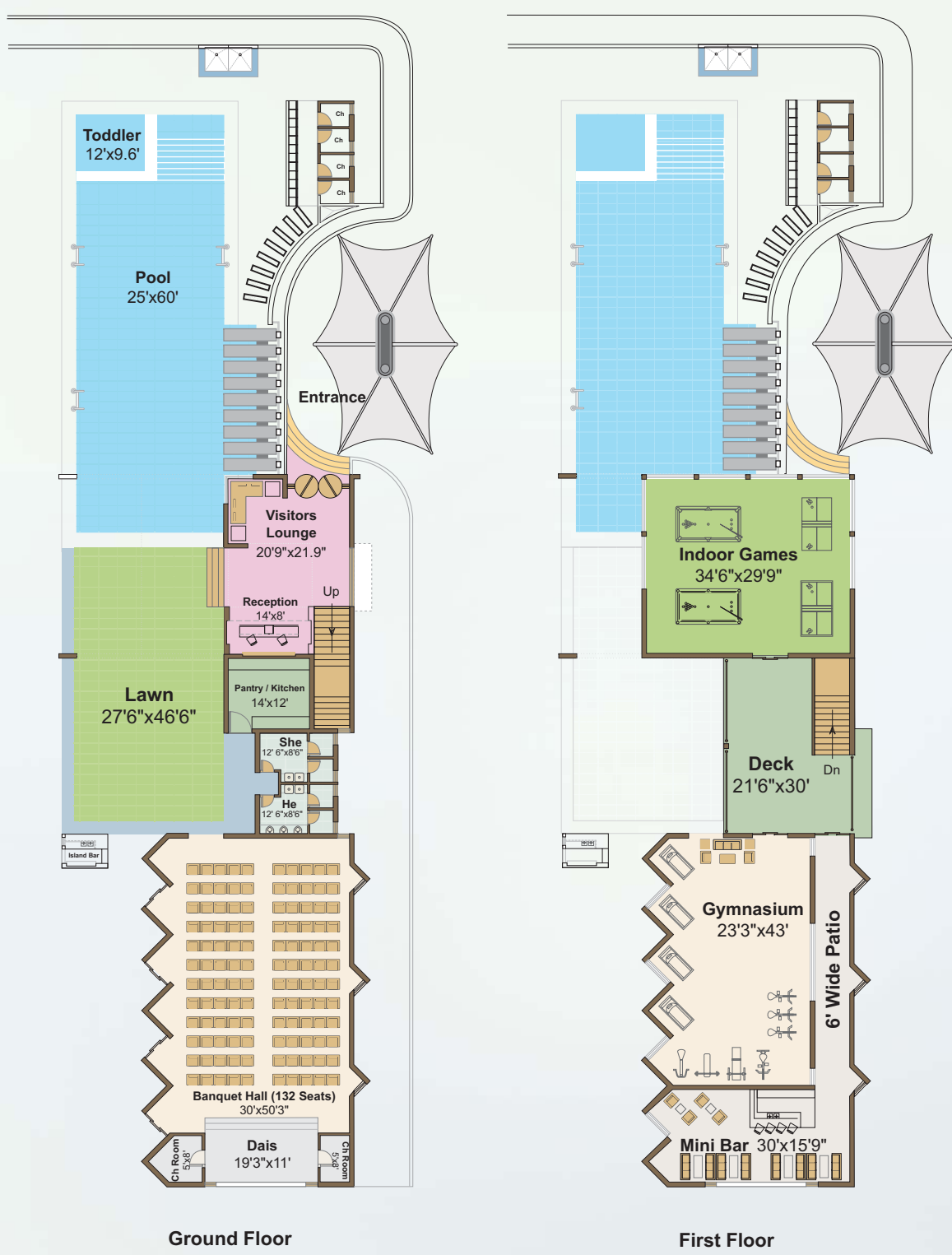
Clubhouse



The Perch has an exclusive and artistically designed multilevel Clubhouse that perfectly matches the exacting standards of your premium lifestyle.

The specially designed value added facilities and amenities in and around the clubhouse are the icing on the cake that one would expect of such a classy venture.

- Vast Clubhouse
- Swimming Pool
- Party Lounge
- Visitor's Lobby
- Gymnasium
- Indoor Games Room
- Billiards & Snooker Table
- Green Zone
- 24 Hrs. Power Back-up
- Mini Bar Lounge



Specifications

Mega Meadows believes in building a unique, integrated lifestyle environment using new innovative technologies with the prime focus on quality architecture and well-planned execution model, pursued with ethical patience.

The Perch has been designed to last forever. The emphasis on quality and commitment is in-built in the project. Whether it is the design, raw materials or the construction, the team of professionals working on the project is committed to give uncompromising quality standards for a superior value.



Structure
Ground plus 1 storied RCC framed structure with concrete block masonry walls with semi-covered car parking in ground floor.



Flooring
Verified tiles / Indian Marble.



Doors
Main Door - Teakwood door frame and shutters.
Internal Doors - Teakwood frames.



Windows
Glass paneled UPVC windows.



Kitchen
Granite counter tops with stainless steel sink, drain board, with 2-feet high cladding of tiles on walls.



Plumbing
Astral make or equivalent UPVC pipes for plumbing for both, hot water and cold water supply.
Provision for geyser.



Sanitary:
Hindware / Cera or equivalent make.



Electrical
High quality copper wiring with modular switches for all bedrooms, dining and living room. Split AC point provision in living room.



Power
Power back-up for all common area lighting and amenities provided. Generator back-up for 4 fans and 4 lights in villas.



Security
CCTV at the main entry and security points.
Provision for video door monitoring.



Finish for Internal / External Walls
Smooth putty finish for all the internal walls with paint. Exterior emulsion paint for external walls.



Water Supply
Each villa will be provided with drinking water supply point.



Abutting Roads
Black topped wide roads with interlocked tiles paving on side walks.



Clubhouse
Modern clubhouse with swimming pool, reading rooms, amenities, indoor games and party area.



Landscape and lighting:
Avenue plantations and landscapes in the open and common areas in and around the villas and clubhouse.



#6-3-664, Flat #103, Prestige Rai Towers, Panjagutta Road, Somajiguda,
Hyderabad-82, A.P., India. Tel.: +91-40-23402999, +919948899999.
megameadows@gmail.com www.megameadows.com

Architect & Engineering Consultants



PR Associates

Road# 12, Banjara Hills, Hyderabad,
A.P., India. www.prassociates.co.in

Green Consultants



www.conifer.co.in

Marketing Partner



Call: +91 99665 06767.



DISCLAIMER: The brochure is a conceptual presentation of the project and not a legal offering. It describes the conceptual plan to convey the intent and purpose of Mega Meadows. The images are imaginary and the specifications and details mentioned in this brochure are tentative and are subject to change at the sole discretion of the company. Details are subject to change and all optional amenities other than the standard specifications are at extra cost.

A Project Initiative of

